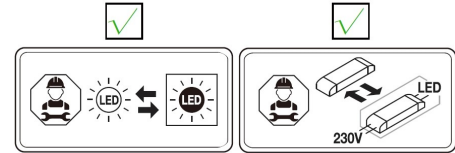
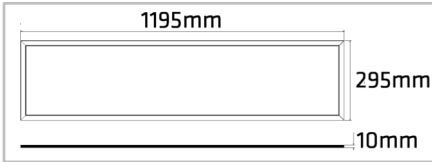
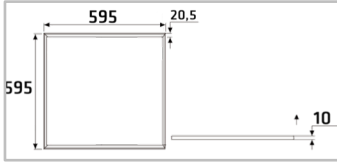


LED Panel Premium



IMPORTANT INFORMATION:

1. Please read this instruction carefully before installation and keep it for future reference.
2. Please conform to the instruction of equipment and installed by professional.
3. Make sure correct voltage applied before use and keep away from heat and vibration source.
4. The light source of this luminaire is not replaceable. When the light source reaches its end of life the whole luminaire shall be replaced.
5. The product is not suitable for any oil pollution ambient or related applications.
6. This product contains a light source of energy efficiency class **D**.
7. It shall not be disposed of as unsorted municipal waste.
8. For indoor use only.

MAIN PARAMETER:

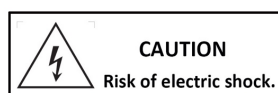
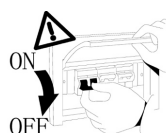
Product	103604	103614	113614	123614
Rated Voltage	AC 180-240V 50/60Hz	AC 180-240V 50/60Hz	AC 180-240V 50/60Hz	AC 180-240V 50/60Hz
LED watt	36W	36W	36W	36W
System eff	38W	38W	38W	38W
LED	Runlite SMD LED 2835	Runlite SMD LED 2835	Runlite SMD LED 2835	Runlite SMD LED 2835
LED Driver	Constant Current 950mA			
Color Temperature	3000K	4000K	3000K	4000K
Protection	Class II	Class II	Class II	Class II
Beam Angle	120°	120°	120°	120°
IP Rated	IP40	IP40	IP40	IP40
Operation Temperature	-20°C <ta<50°C	-20°C <ta<50°C	-20°C <ta<50°C	-20°C <ta<50°C
Product Size	595x595x10mm	595x595x10mm	1195x295x10mm	1195x295x10mm

Suitable LED driver (Not included - Purchase separately)	
394000	LED driver dimmebar 40W Max
394810	LED driver ikke dimbar 40W Max
394830	LED driver DALI/1-10V/Push Dim 40W Max

Available Mounting Hardware (Not Included - Purchase separately)	
100014	Festebrakett
100024	Ramme for utenpåliggende montering 595x595
100034	Ramme for utenpåliggende montering 1195x295
100224	Ramme FIX for utenpåliggende montering 595x595
100234	Ramme FIX for utenpåliggende montering 1195x295
110014	Wireoppheng

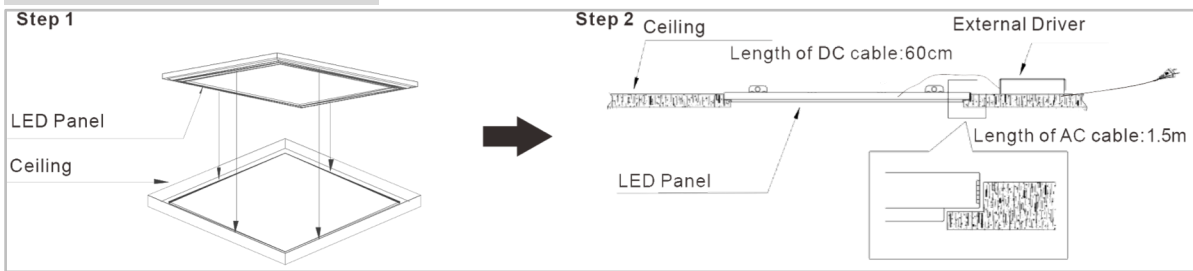
INSTALLATION INSTRUCTIONS:

1. Always switch off the power supply before installation.
2. Make sure all parts are ready when open the box and prepare the installation tools the lighting needs.
3. Should be installed by qualified electricians.
4. If there is any damage on the housing or glass cover, should view it as disqualified product that cannot be used.
5. If the external flexible cable or cord of this luminaire is damaged, it shall be exclusively replaced by the manufacturer or his service agent or a similar qualified person in order to avoid a hazard.

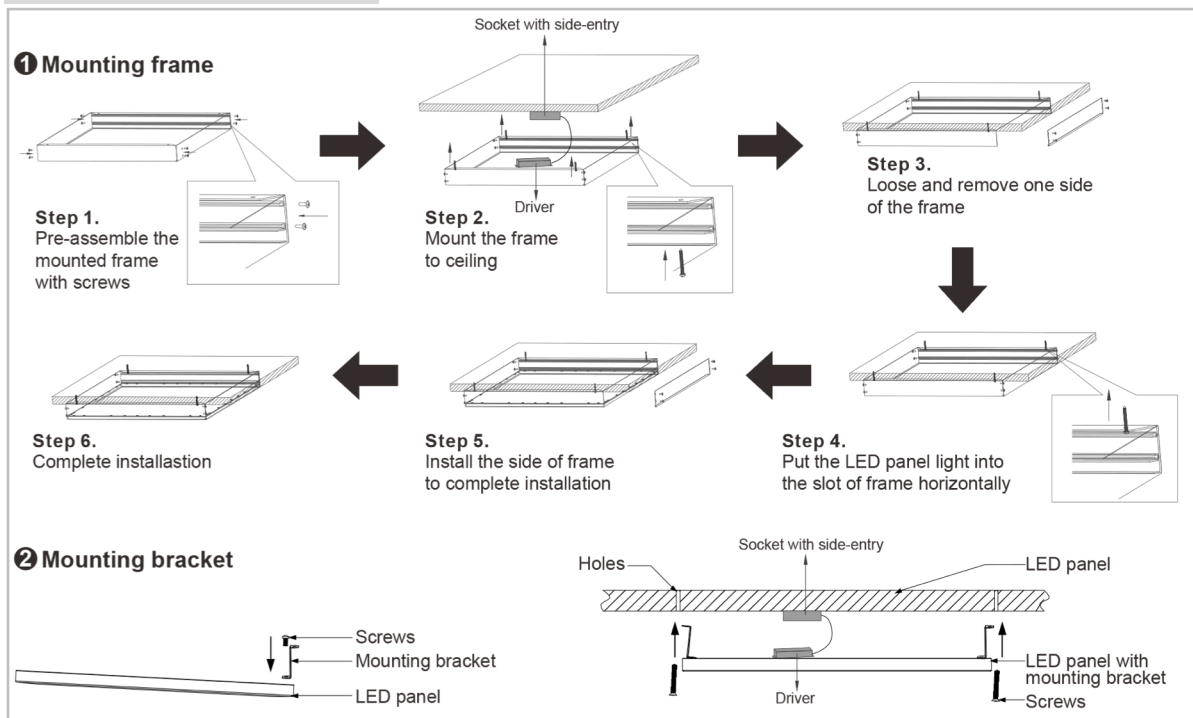


INSTALLATION STEPS:

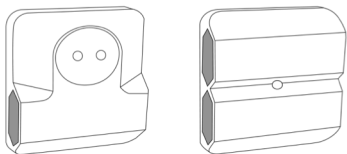
A. Built-in type



B. Mounted type



Following sockets are recommended to use when installing with mounting frame or mounting bracket.
El. nr. 15 021 72 2xEuro and 1xShcuko
El. nr. 15 021 84 4xEuro



C. Suspended type

