



**Product:** Cooker guard mKomfy 2G 25R, Chrome  
**EI.No.:** 6251610

## Description

The cooker guard is a security product that monitors the hob on your cooker. It performs a dual security function: timer and monitoring for overheating. The Mkomfy has tamper protection.

The 2G has a built-in location sensor for ease of installation. Built-in bracket for installation on wall or in cooker hood/extractor, 50-120 cm over hob.

The Memory placement function avoids having to reinstall the cooker guard after changing the battery.

The Mkomfy consists of two modules: a cooker guard sensor (mounted on the wall over the cooker) and a cooker socket for connecting the hob.

## Technical data

### Socket

Voltage: 230 VAC +10/-20 %

Max. load: 25A

ON time: 2 hours (expandable)

Dimensions: 138 x 117 x 80 mm

### Sensor

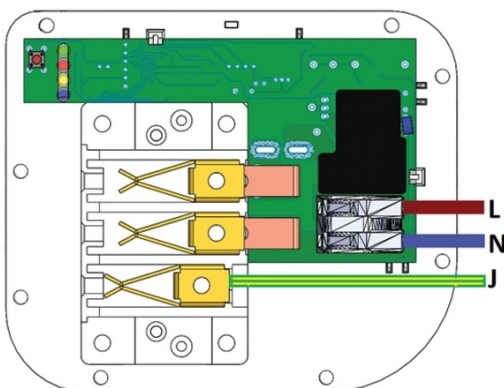
Battery: 2 x AAA

Battery life: 6 år

RF: 868.100 Mhz / +5 dBm

Dimensions: 32 x 83 mm

## Wiring diagram



CTM Lyng AS, Verkstedveien 19, 7125 Vanvikan, Norway  
Tel: +47 74 85 55 10 Email: mail@ctmlyng.no Web: www.ctmlyng.no  
Org.nr.: NO 936 285 244 MVA