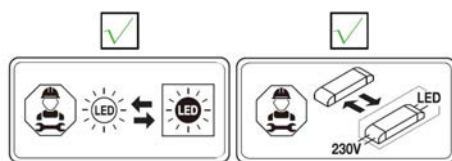
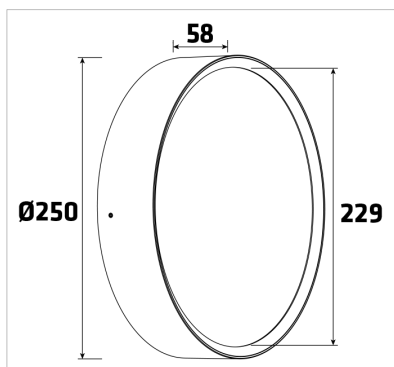


Bulkhead



IMPORTANT INFORMATION:

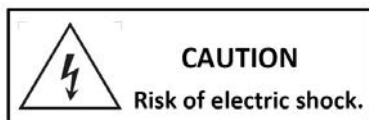
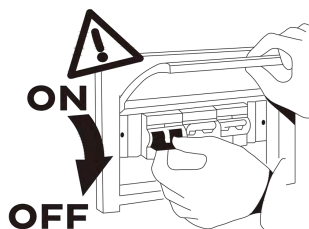
1. Please read this instruction carefully before installation and keep it for future reference.
2. Please conform to the instruction of equipment and installed by professional.
3. Make sure correct voltage applied before use and keep away from heat and vibration source.
4. The light source of this luminaire is not replaceable. When the light source reaches its end of life the whole luminaire shall be replaced.
5. The product is not suitable for any oil pollution ambient or related applications.
6. This product contains a light source of energy efficiency class F.
7. It shall not be disposed of as unsorted municipal waste.
8. For indoor and outdoor use under shelter.

MAIN PARAMETER:

Article nr	261824 White	261805 Black
Rated Voltage	AC 220-240V 50/60Hz	AC 220-240V 50/60Hz
LED watt	16W	16W
System eff	18W	18W
LED	Epistar SMD 2835 LED	Epistar SMD 2835 LED
LED Driver	230mA Constant Current	230mA Constant Current
Color Temperature	3000K	3000K
Protection	Class I	Class I
Beam Angle	110°	110°
IP Rated	IP65	IP65
Operation Temperature	-20°C <ta<45°C	-20°C <ta<45°C
Product Size	Ø250mmx58mmx229mm	Ø250mmx58mmx229mm

INSTALLATION INSTRUCTIONS:

1. Always switch off the power supply before installation.
2. Make sure all parts are ready when open the box and prepare the installation tools the lighting needs.
3. Should be installed by qualified electricians.
4. If there is any damage on the housing or glass cover, should view it as disqualified product that cannot be used.
5. If the external flexible cable or cord of this luminaire is damaged, it shall be exclusively replaced by the manufacturer or his service agent or a similar qualified person in order to avoid a hazard.



Art nr. 261824/261805

INSTALLATION STEPS:

1. Select the required position for the luminaire.

Step 1

Take out the lamp and accessory.

Step 2

Make the frame, diffuser and back housing separately.

2. Ensure the luminaire is securely fixed to the wall.

Step 3

Fix the back housing on the wall or ceiling by screws.

Step 4

- a. Connect the plugs between the battery and driver if with Emergency function.
- b. Choose the color temperature with DIP switch if it's the color changeable version.
- c. Connect the AC wires to the block.

3. Connect Mains supply to the terminal block of luminaire.

- Mains supply LIVE (Brown) – L
- Mains supply NEUTRAL (Blue) – N
- Mains supply EARTH (Yellow/Green) – E (marked)

IMPORTANT: The luminaire is Class I and must be earthed.

Step 5

Connect the DC plugs, put back the cover to the back plate and fix it by screws.

Step 6

Buckle the frame back and fix it by proper tools.

4. Switch on the power supply.

Step 7

Installation finished, turn on the switch.