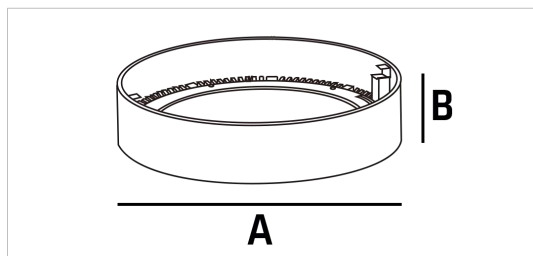
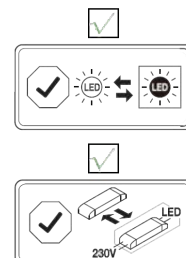


## Frisbee Surface



	A	B
241004	180mm	40mm
241804	240mm	40mm
253104	300mm	40mm



### IMPORTANT INFORMATION:

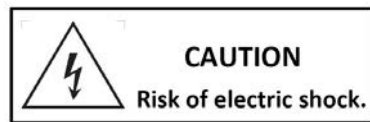
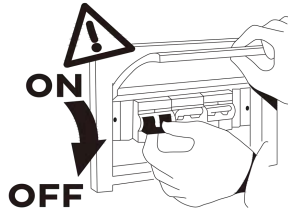
1. Please read this instruction carefully before installation and keep it for future reference.
2. Please conform to the instruction of equipment and installed by professional.
3. Make sure correct voltage applied before use and keep away from heat and vibration source.
4. The light source of this luminaire is not replaceable. When the light source reaches its end of life the whole luminaire shall be replaced.
5. The product is not suitable for any oil pollution ambient or related applications.
6. This product contains a light source of energy efficiency class **F**.
7. It shall not be disposed of as unsorted municipal waste.
8. For indoor use only.

### MAIN PARAMETER:

Product	Mini 241004	Midi 241804	Maxi DALI 253104
Rated Voltage	220-240V 50/60Hz	AC 220-240V 50/60Hz	AC 220-240V 50/60Hz
LED watt	9W	16,2W	21,6W
System eff	10W	18W	25W
LED	SMD LED	SMD LED	SMD LED
LED Driver	Constant Current 250mA	Constant Current 420mA	Constant Current 700mA
Color Temperature	3000K	3000K	3000K
Protection	Class II	Class II	Class II
Beam Angle	120°	120°	120°
IP Rated	IP20	IP20	IP20
Operation Temperature	-20°C <ta<40°C	-20°C <ta<40°C	-20°C <ta<40°C
Product Size	Ø180mmxH40mm	Ø240mmxH40mm	Ø300mmxH40mm

### INSTALLATION INSTRUCTIONS:

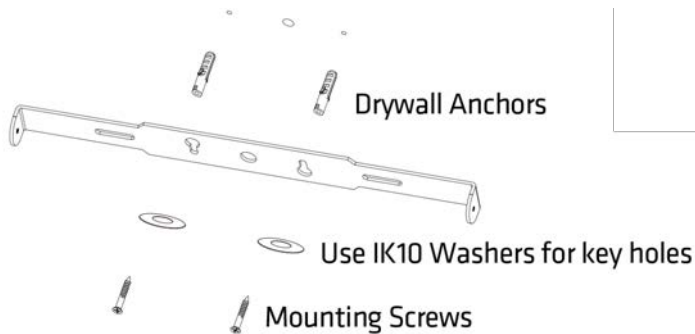
1. Always switch off the power supply before installation.
2. Make sure all parts are ready when open the box and prepare the installation tools the lighting needs.
3. Should be installed by qualified electricians.
4. If there is any damage on the housing or glass cover, should view it as disqualified product that cannot be used.
5. If the external flexible cable or cord of this luminaire is damaged, it shall be exclusively replaced by the manufacturer or his service agent or a similar qualified person in order to avoid a hazard.



## INSTALLATION STEPS:

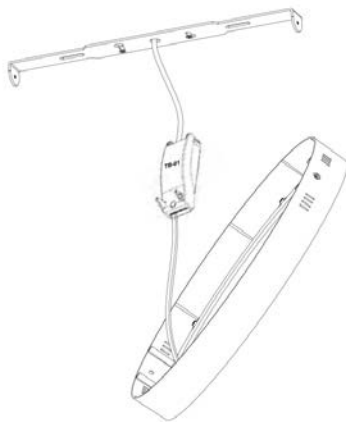
1. Select the required position for the luminaire. Fix bracket to ceiling using Drywall Anchor and Mounting Screw.

**Note: Use Washers when key holes are used.**



**IMPORTANT:**  
Please refer to next page  
if single lead wire is used.

2. Connect Mains supply to the quick release terminal block.



3. Locate luminaire to bracket using attached Allen Key to secure Hex screws. Make sure it is securely located. Switch on the power supply.

