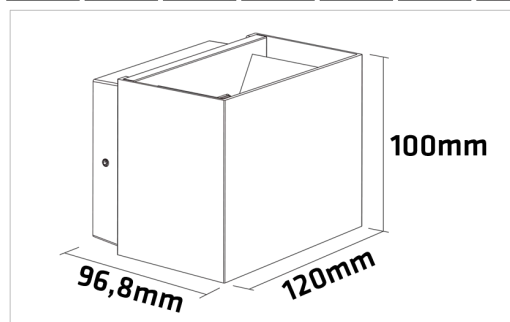


Rego



IMPORTANT INFORMATION:

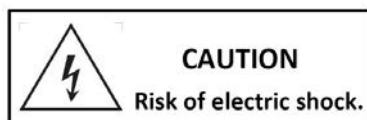
1. Please read this instruction carefully before installation and keep it for future reference.
2. Please conform to the instruction of equipment and installed by professional.
3. Make sure correct voltage applied before use and keep away from heat and vibration source.
4. The light source of this luminaire is not replaceable. When the light source reaches its end of life the whole luminaire shall be replaced.
5. The product is not suitable for any oil pollution ambient or related applications.
6. This product contains a light source of energy efficiency class **G**.
7. It shall not be disposed of as unsorted municipal waste.
8. For indoor use or under shelter for outdoor use.

MAIN PARAMETER:

Product	652504	652511
Rated Voltage	AC 220-240V 50/60Hz	AC 220-240V 50/60Hz
LED watt	8,5W	8,5W
System eff	10W	10W
LED	SMD LED	SMD LED
LED Driver	Constant Current 140mA	Constant Current 140mA
Color Temperature	3000K	3000K
Protection	Class I	Class I
Beam Angle	15°-120°	15°-120°
IP Rated	IP65	IP65
Operation Temperature	-20°C <ta<45°C	-20°C <ta<45°C
Product Size	120mmx96,8mmx100mm	120mmx96,8mmx100mm

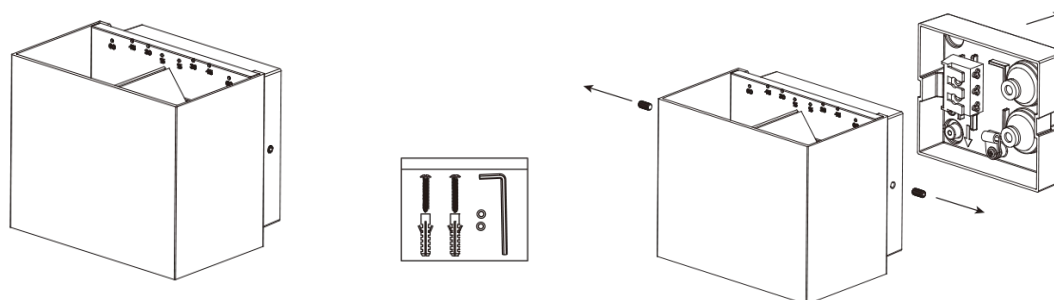
INSTALLATION INSTRUCTIONS:

1. Always switch off the power supply before installation.
2. Make sure all parts are ready when open the box and prepare the installation tools the lighting needs.
3. Should be installed by qualified electricians.
4. If there is any damage on the housing or glass cover, should view it as disqualified product that cannot be used.
5. If the external flexible cable or cord of this luminaire is damaged, it shall be exclusively replaced by the manufacturer or his service agent or a similar qualified person in order to avoid a hazard.



INSTALLATION STEPS:

1. Select the required position for the luminaire. Loosen screws to separate luminaire body and base.

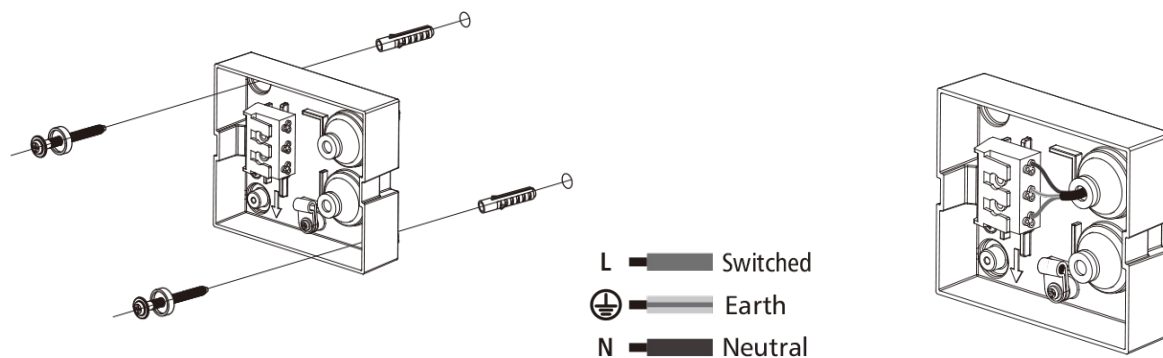


2. Fix the luminaire base to required position. Provide a power supply to the luminaire using a suitable cable.

Connect the mains supply to the luminaire –

- **Mains supply LIVE (Brown) – L**
- **Mains supply NEUTRAL (Blue) – N**
- **Mains supply EARTH (Yellow/Green) – E**

IMPORTANT: These luminaires are Class I and must be earthed



3. Connect the plug & play connector and fix luminaire body to base. Make sure it is securely fixed. Switch on the power supply.

